



Let **UK** Home

**1 Bedrooms**

**Flat**

**Located in London**

**£1,730 Per Month**



[info@letukhome.co.uk](mailto:info@letukhome.co.uk)

<https://www.letukhome.co.uk/>

01795 358 886



# 1 Magellan Boulevard London

E16 2FU



Let UK Home are delighted to offer this stunning one-bedroom apartment located within Bawley Court which is just a few minutes walk to Gallions Reach DLR Station.

This property comprises a large bright kitchen with a stylishly attached dining area, a spacious living room leading to a large private balcony, one double bedroom, a spacious bathroom and ample storage. Residents will enjoy video entryphone, concierge service and 24h security.

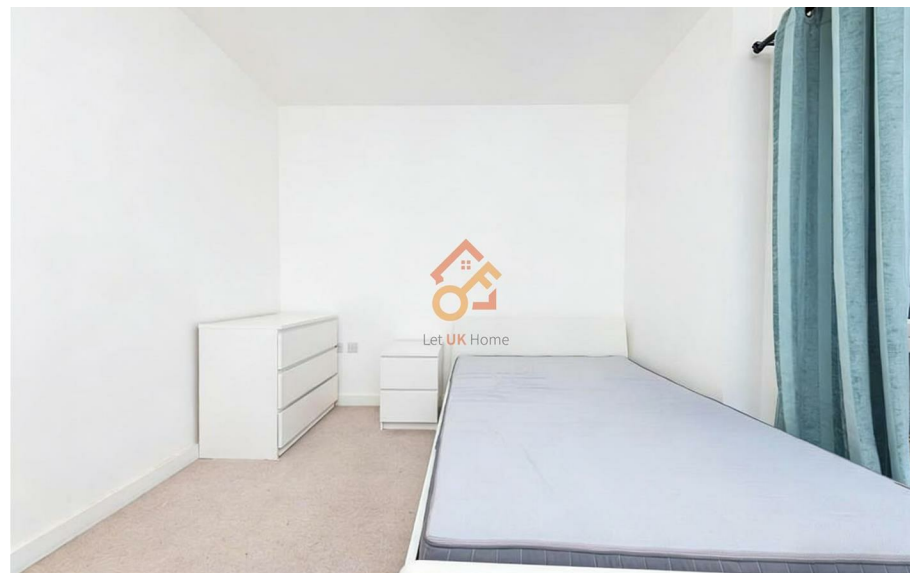
Albert Basin Way is just a short walk from Gallions Reach Shopping Park, which has several large supermarkets. Additionally, there are other shops, bars, restaurants and facilities at Gallions Reach Retail Park, just minutes away. The development is also close to the bustling Canary Wharf area, with many bars, restaurants and shops for consumption and entertainment.

Ideally located near Gallions Reach DLR station, Bawley Court offers excellent transport links, including easy connections to Canary Wharf, the City, and the West End, with future Crossrail access. Close to London City Airport and with convenient routes for motorists and cyclists, this is riverside living at its best. A range of local shops, cafés, and amenities in nearby Beckton add further convenience to this well-connected and peaceful location.

# 1 Magellan Boulevard London

£1,730 Per Month

- Concierge Service
- Video Entry
- 24h Security
- Balcony





Let **UK** Home

3F 2 Eastbourne Terrace  
Paddington  
London  
W2 6LG

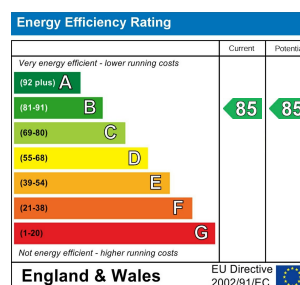
01795 358 886

info@letukhome.co.uk

**Council Tax Band: C**

**Local Authority:**

Agents Note: Whilst every care has been taken to prepare these particulars, they are for guidance purposes only. All measurements are approximate and are for general guidance purposes only and whilst every care has been taken to ensure their accuracy, they should not be relied upon and potential buyers/tenants are advised to recheck the measurements.



<https://www.letukhome.co.uk/>